

# TB24 Ringtrace

## GENERAL CHARACTERISTICS

**Wet / White Wet Inlay dimensions:** 25 x 10 mm  
**—Antenna dimensions:** 22 x 8 mm  
**Standard pitch:** 16,42 mm

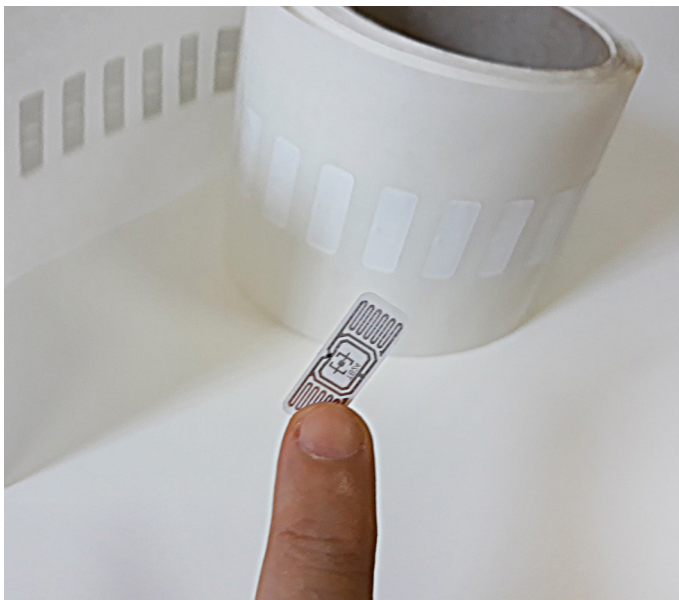
**Operating frequency:** Global (860 - 960 MHz)  
**Chip:** IMPINJ Monza 4D/E/QT  
**EPC Memory:** 128/496/128 bits  
**USER Memory:** 32/128/512 bits  
**TID Memory:** 96 bits, preencoded for multivendor chip (MCS) based serialization, factory programmed

**Inlay substrate material:** PET

**Inlay-to-liner adhesive:** SH3020 (Arconvert)  
**Liner material:** CC62 (Arconvert)  
**Total thickness over chip:** 187 microns

*Minimum order quantity: 10,000 pcs. Average of units per roll: TBD*

The RFID tag TB24 Ringtrace is **suitable for near-field and far-field**. Thanks to its tiny size, it's perfect for jewellery, cosmetics, pharmaceuticals or traceability in hospitals. But it also suits RFID deployments of the supply chain.



*CARE AND HANDLING RFID inlays are sensitive to ESD. Observe standard practices to keep environmental static charge to a minimum. APPLICATIONS This product should be tested by the customer/user thoroughly under end use conditions to ensure the product meets the requirements. Trace-ID does not represent that this product is fit for any purpose or use. PRODUCT CHANGES Trace-ID reserves the right to modify, change, supplement or discontinue product offerings at any time without notice. © 2018 Trace-tech Id Solutions S.L. All rights reserved.*

**Standard web width:** 40 mm  
**Unwind direction:** Label side out

**RF Protocol:** ISO-18006-C, EPC Class 1, Gen 2  
**RoHS:** EU Directive 2011/65 EU Compliant  
**Quality assurance:** 100% read tested with out-of-tolerance inlay marked  
**Operating temperature:** -40°C to 85°C

## COMMON APPLICATIONS

*Pharmaceutical and healthcare. Cosmetics. Jewellery. Supply chain.*

